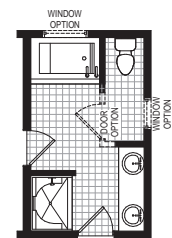
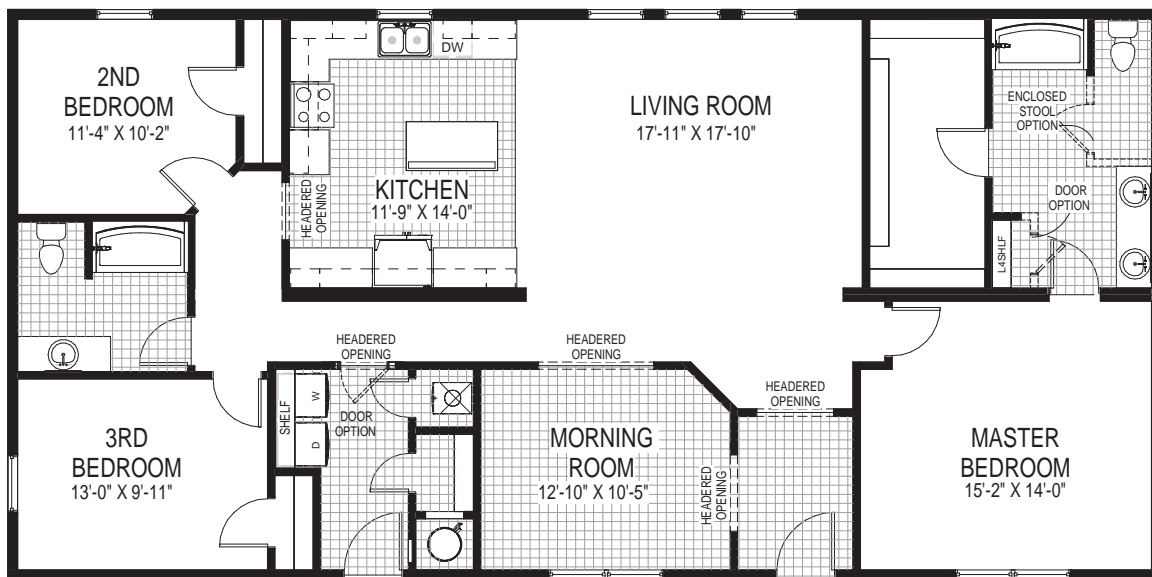


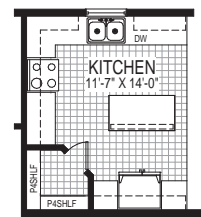


# Halford

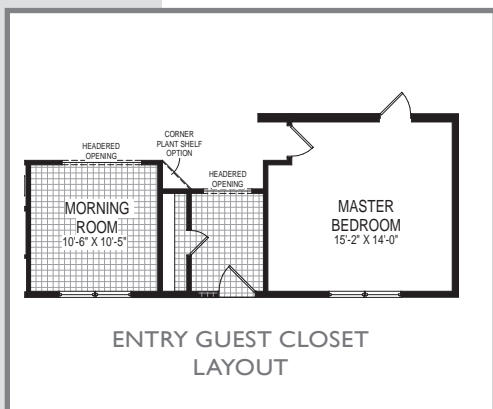
1780 Sq. Ft.  
29'8" x 60'0"



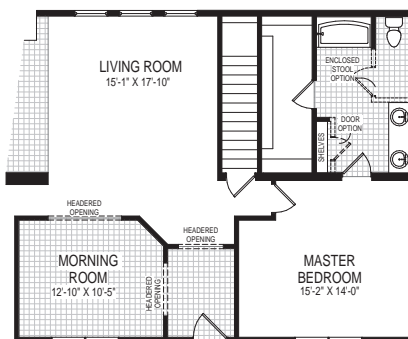
ALTERNATE 5-PIECE MASTER BATH



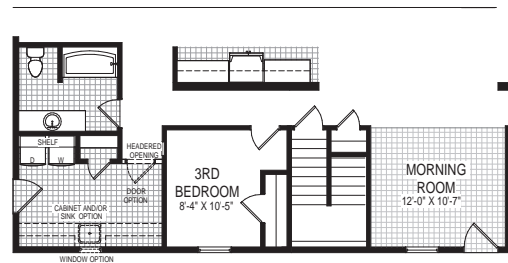
ALTERNATE KITCHEN W/ CORNER PANTRY



ENTRY GUEST CLOSET LAYOUT



ALTERNATE BASEMENT STAIR OPTION



ALTERNATE END UTILITY FOR U-SHAPED BASEMENT STAIR OPTION W/ FURNACE / WATER HEATER IN BASEMENT